

# CHARGER RCM SYSTEM

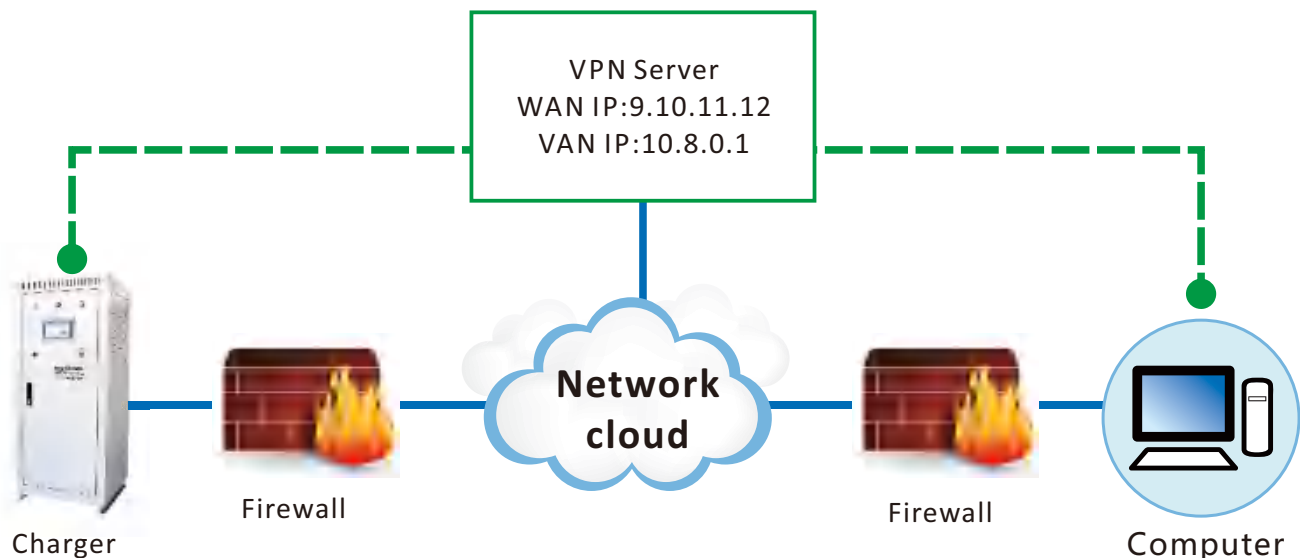
**EverExceed**<sup>®</sup>  
power your applications

EverExceed charger RCM system has very excellent remote control and remote management functions via PC, mobile and laptop terminals, therefore, the charger operation status can be controlled and monitored efficiently, safely and intelligently.

## Key advantages:

■ EverExceed charger RCM system use the cutting-edge remote connection technology, and the breakthrough devices. The most distinctive advantages of EverExceed RCM system over traditional remote connection device are as follows:

Traditional remote connection (see below blue color diagram)	EverExceed RCM system (see below green dash line diagram )
Connection to computer shall pass many firewalls, need many network setting	Computer and charger can connect to nominated VPN server to exchange data
Must set network or router, so coordination with IT dept. Is more important	No need to set network
One WAN IP only support one device connection	One WAN IP can support multiple device connection
Connection is impossible for the device connected by more than two routers	Can connect smoothly to remote control for device connected by multiple routers

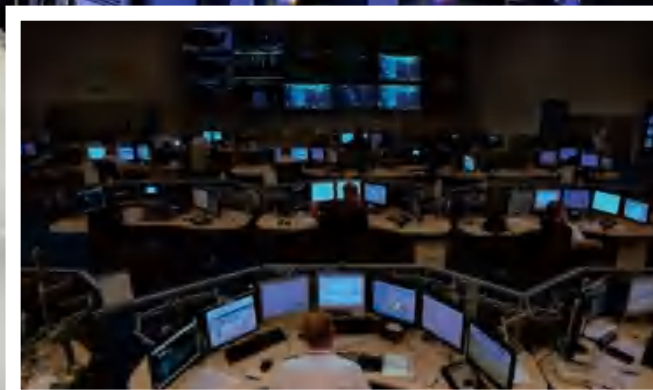


**Network connection diagram**



**EverExceed**<sup>®</sup>  
power your applications

# CHARGER RCM SYSTEM



## ■ Humanity software interface:

EverExceed charger RCM system log in interface is very humanized, user friendly and simple, just like QQ/Skype. User just need to key in Domain account, user name and password, then can connect to remote device easily (not limited in LAN).

**LOGIN INTERFACE**

everexceed101

1

.....

log in

Remember my account

Remember password

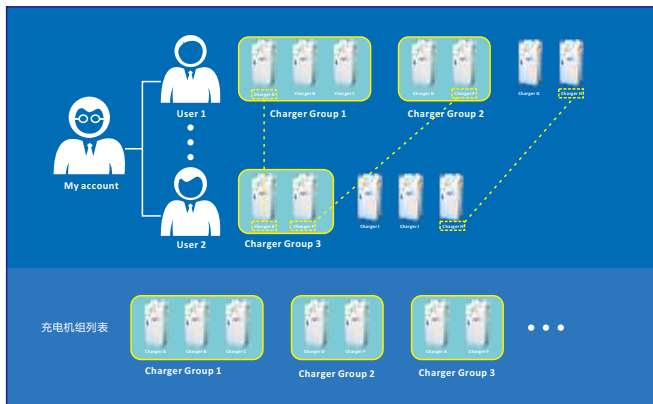
Automatic login

# CHARGER RCM SYSTEM

**EverExceed**<sup>®</sup>  
power your applications

## Powerful management functions

Domain is the basic sector of human-machine management, with special management mechanism. Single unit management and group management are available, so it is very convenient for users at different levels with different privileges to set and monitor. One domain can contain multiple HMI(charger), HMI group, and domain user.



The picture on the left shows a domain example:

In this example, one domain can be used by multiple users. For example, user No.1 and user No. 2, charger can be distributed as Charger Group1, Charger Group2, Charger Group 3.....

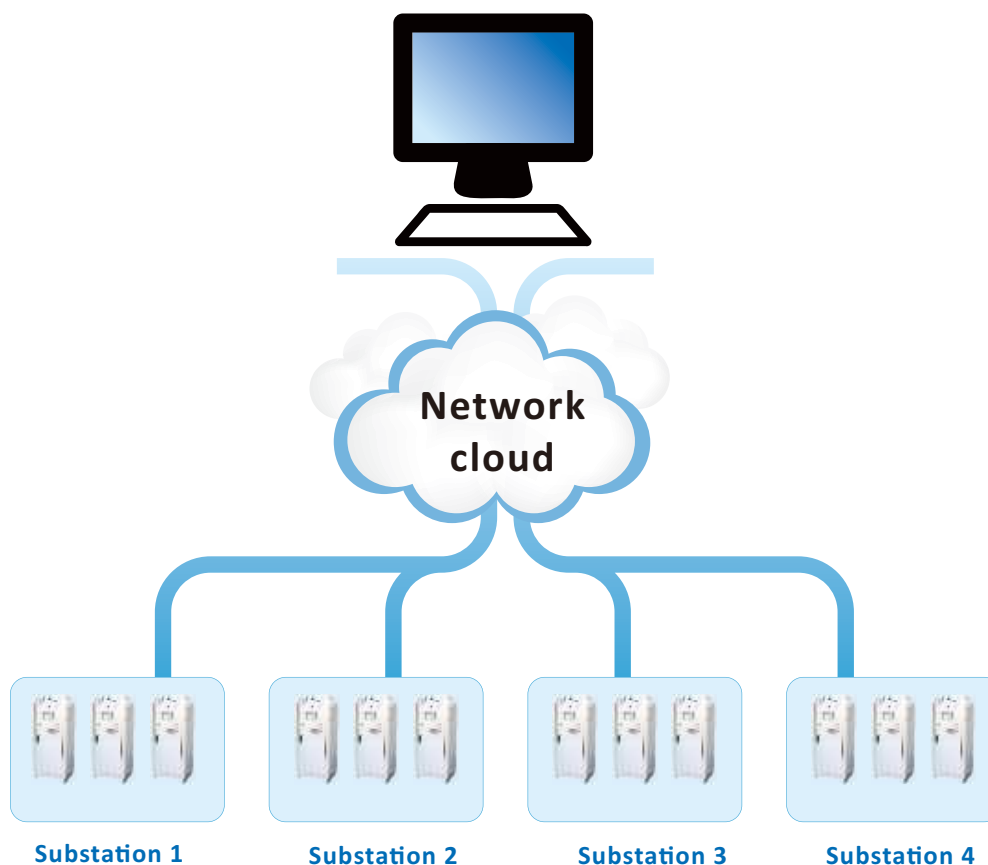
One charger can be distributed to more than one charger group (like the charger group A)

One user can be distributed to multiple charger group, and can connect to the chargers in this group. (like User No.1 and Charger group 1)

Every user can connect to the charger which is distributed to its group. (like User No.2 and Charger J)

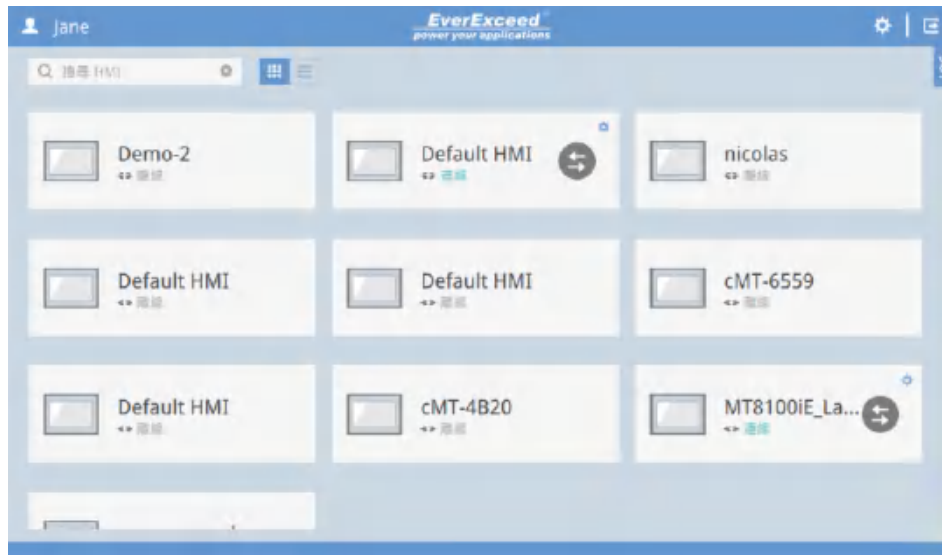
Multiple user can connect to the same charger, can distribute the charger to charger group (like charger A) , or distribute the charger to user directly (charger H) .

## My Domain configuration (Domain example)



## Powerful remote control functions

EverExceed RCM system has very powerful remote control functions, the core remote software support PC, mobile and laptop control, can upgrade the system software remotely. The monitor main interface as follows:



## EverExceed remote software support PC, mobile and laptop.

